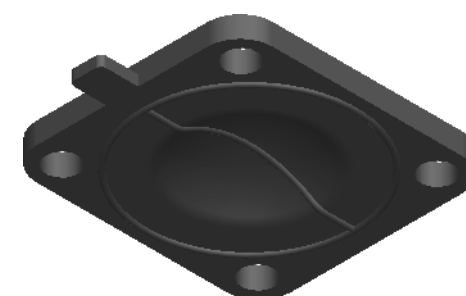
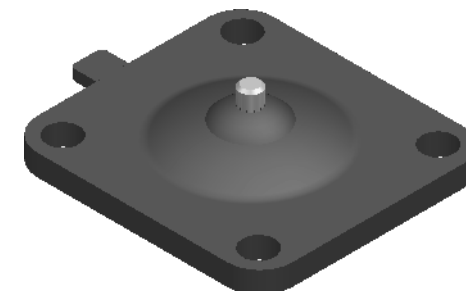
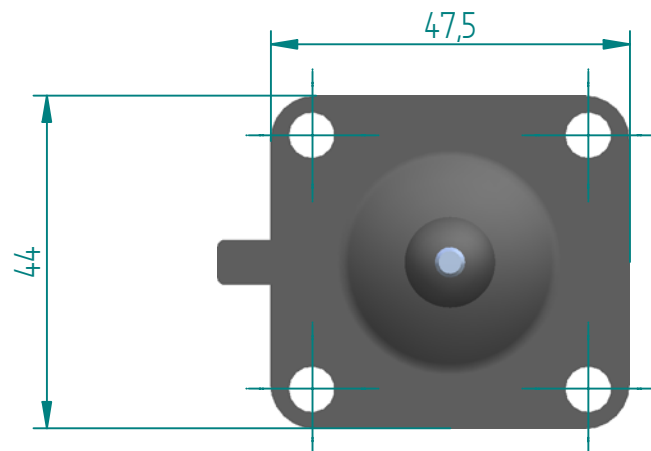
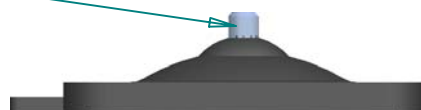


REVISION HISTORY

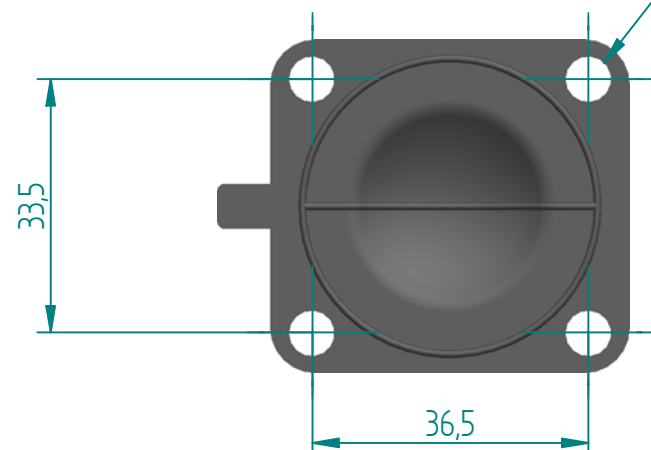
REV	DESCRIPTION	DATE	APPROVED



#8-32 UNC (INSERT SCREW)





Ø6 (4 Holes)



Replacement Diaphragm for :-

OEM PART = 41281 or 46603

USED ON 1/2" (DN15) Diaphragm Valve

	NAME	DATE	<div>DIAPHRAGM[®] DIRECT</div>		
DRAWN	M.MC KEON	09/29/14			
CHECKED					
<div><u>Material - EPDM</u></div> <div>Complies with CFR 177.2600 and Conforms to USP Class VI Biological Reactivity Tests Section #87 and #88</div>			TITLE DD05-IE7		
			SIZE A	<div>ROMYNOX</div>	REV B
			FILE NAME: DD05-IE7.dft		
			SCALE: None	ECO:0605	SHEET 1 OF 1

Disclaimer - Diaphragm Direct® does not manufacture, represent, nor sell OEM valves or diaphragms manufactured by any other company. Diaphragm Direct® brand diaphragms are not sponsored by any other manufacturers. Any name, model, part number, brand, image, material or referral is for descriptive purposes only. Diaphragm Direct® brand replacement diaphragms are guaranteed to fit OEM equipment and meet or exceed OEM specifications. Diaphragm Direct® brand replacement diaphragms are covered by the standard Diaphragm Direct® limited product warranty.