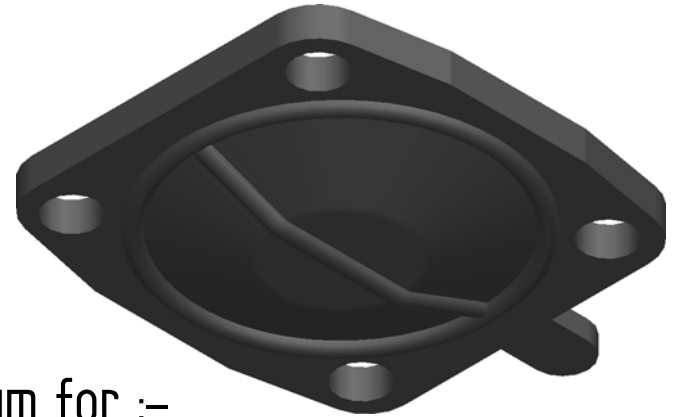
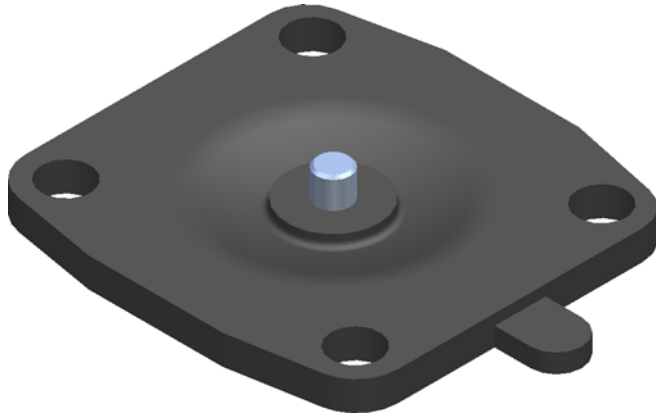


1/4"-20 UNC (INSERT SCREW)

Ø 9 (4 Holes)

**Replacement Diaphragm for :-**  
 OEM PART = 41283 or 46605  
 USED ON 1" (DN25) Diaphragm Valve

| REVISION HISTORY |             |      |          |
|------------------|-------------|------|----------|
| REV              | DESCRIPTION | DATE | APPROVED |
|                  |             |      |          |



|  |           |          |
|--|-----------|----------|
|  | NAME      | DATE     |
| DRAWN  | M.MC KEON | 08/21/14 |
| CHECKED  |           |          |
| <b>Material - EPDM</b>   |           |          |
| Complies with CFR 177.2600<br>and Conforms to<br>USP Class VI Biological Reactivity<br>Tests Section #87 and #88 |           |          |

|                         |                       |
|-------------------------|-----------------------|
|                         |                       |
| <b>DIAPHRAGM DIRECT</b> |                       |
| TITLE <b>DD10-IE7</b>   |                       |
| SIZE A                  |                       |
| FILE NAME: DD10-IE7.dft | REV B                 |
| SCALE: 1:1              | ECO:0605 SHEET 1 OF 1 |

Disclaimer - Diaphragm Direct® does not manufacture, represent, nor sell OEM valves or diaphragms manufactured by any other company. Diaphragm Direct® brand diaphragms are not sponsored by any other manufacturers. Any name, model, part number, brand, image, material or referral is for descriptive purposes only. Diaphragm Direct® brand replacement diaphragms are guaranteed to fit OEM equipment and meet or exceed OEM specifications. Diaphragm Direct® brand replacement diaphragms are covered by the standard Diaphragm Direct® limited product warranty.